

JULY 2016 Ministry Update

At a gathering in Geneva on his 70th birthday in 1935, Dr. John R Mott spoke these words, “While life lasts I am an evangelist....The most highly multiplying work is multiplying the workers. He who does the work is not so profitably employed as he who multiplies the doers.”

We’ve taken this idea to heart realizing that it doesn’t take long to accomplish more than we could have on our own when we train others and point them to valuable ministry opportunities.

As students share the gospel, lead Bible studies, plan events, and in many other ways minister to others at home and abroad, God bears fruit. At the same time, internal conviction and an unshakeable desire for ministry often springs up, which results in life-long laborers. We love seeing unselfish workers raised up that will do things and go places we never could. An advantage of working with students is they can often readily switch career paths to enter vocational ministry as they follow the Lord’s call. Praise God many organizations reap the benefits, including Cru.

Rejoice with us as we celebrate again what God has done to raise up needed laborers from our midst. Today, the following seven men and women who have served with us in our ministry in Wisconsin are in Florida at Cru’s new staff training. Signs once again that your prayers and finances offered for ministry in Wisconsin are bearing fruit all over.

We can’t thank you enough,

Scott Roe



Josh Graham served as a UW-Madison student volunteer and spent the bulk of last year as an intern* in Cru’s regional office in Minnesota. He is now assigned to Cru’s campus ministry team in Duluth, MN.

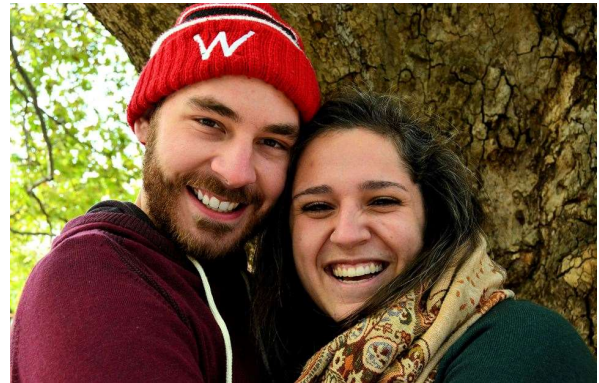
**Note for some clarity. Cru interns serve as valuable full-time staff for 1 to 2 years, but they don’t receive the full training, benefits, etc. as these full-time staff who likely will serve for many years.*



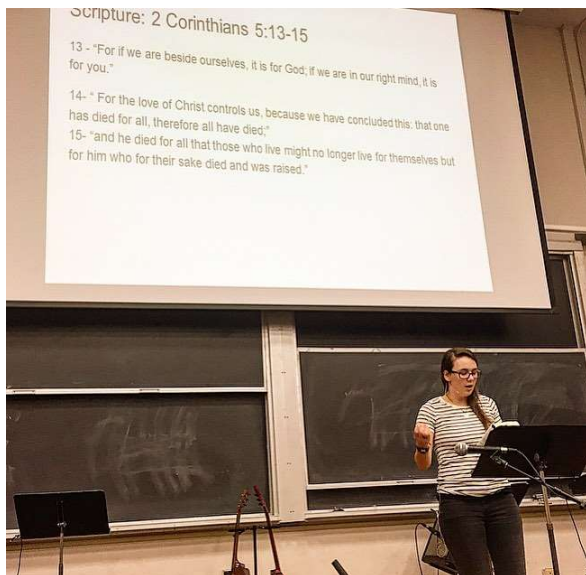
Andrew Graham (Josh’s twin brother) served as a student volunteer and then as a year-long campus missionary in Tanzania. He is now assigned to Cru’s campus ministry in Fargo, ND.



Everett and Ella Schroeder. Ella served as a student volunteer and then served the last two years as a part-time Cru staff member on our Madison team. During these last two years, Everett also volunteered with Cru, even as he spent this last year working as P.E. teacher at Abundant Life Christian School. They have been assigned back to our Madison Cru team!



Richard served as a student volunteer before spending the last two years as a Cru missionary in the Middle East. He and his new bride are now assigned long-term to that country.



Brianna Klotz served as a student volunteer and then served one year as a missionary in Europe with Cru. Last year, she returned as an intern on our Madison staff team. She has been assigned to campus ministry in St Louis, MO.



Jim Walker breaks the mold. While he came to Christ at UW through a believing student who reached out to him, he wasn't involved with Cru as a student and had worked about three decades in the corporate world before we invited him to join us for a day-long Executive and Entrepreneurial Leadership Forum outreach a few years back. Shortly after that, he and his wife, Deborah, moved to Madison taking the role of CFO of the UW business school. At that time he began to volunteer with Cru and his local church's campus ministry. Jim has been a great volunteer shepherding many students. He caught the ministry bug so he joined Cru staff, too! He will divide his time working with Cru's global operations and serving on Madison's local staff team. Although he wasn't a student volunteer with Cru, it was fun that his just graduated daughter was.

WANT TO RECEIVE LETTERS LIKE THIS VIA EMAIL?

Please tell us by emailing scott.roe@cru.org with the names and address of everyone to send it to in your household.