

Evangelist and Mrs Robert Lewis
40 Pine Swamp Road, Cumberland, RI 02864

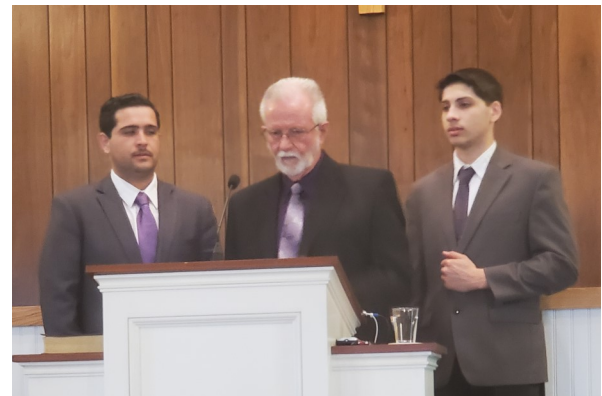
The Lewis Team



April 2022

Friends,

Resurrection Sunday found us in Tiverton, RI for the second Sunday of our ministry with the North Tiverton Baptist Church. It was an exciting day with approximately fifty people in attendance. Pastor Mike Hamilton and two brothers, Titus and Kobe Taylor, sang a special. I preached from Matthew 26. After the service, I prayed with a young woman, and she accepted Christ Jesus as her Savior.



My wife and I are anticipating a resurgence of revival in this grand old church that has survived four months of the pastor's medical leave and two years of the pandemic. They have done a magnificent job of keeping the church on the firing line for the Lord, but now must retire due to multiple health concerns. We do not know how long this chapter will last, but we are eager to fulfil our responsibility to help hurting churches, win souls, and encourage the brethren wherever the Lord leads us. Your prayers are certainly an invaluable element in the equation.

In addition to this ministry in Rhode Island, I will be speaking for David Wilder in Auburn, Washington, in May, and Bill Marshall in St Joseph, MO, in October.

A special prayer request is that the Lord would give us clear direction about traveling to S. Korea in August to preach several times for Brother Benjamin Park and the churches in S. Korea. We would like to go. This is the third attempt Brother Park has made to host a Fundamental Baptist Conference. The covid pandemic and the economy has prevented him from being able to accomplish his goals until now.

I dare not fail to mention that New England is ripe for revival. It is sad that church planters and missionaries do not often venture to the churches that are the farthest away from the hub of fellowship activity. There are many huge cities in New England that are as ripe for the harvest as any city in a foreign land.

Thank you for your prayers, friendship and support!

Robert Lewis

Support address

GIBM: Robert Lewis

PO Box 700 Sherman, TX 75091