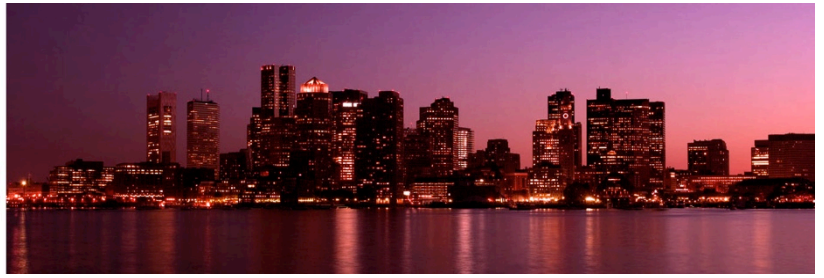


July 1, 2019

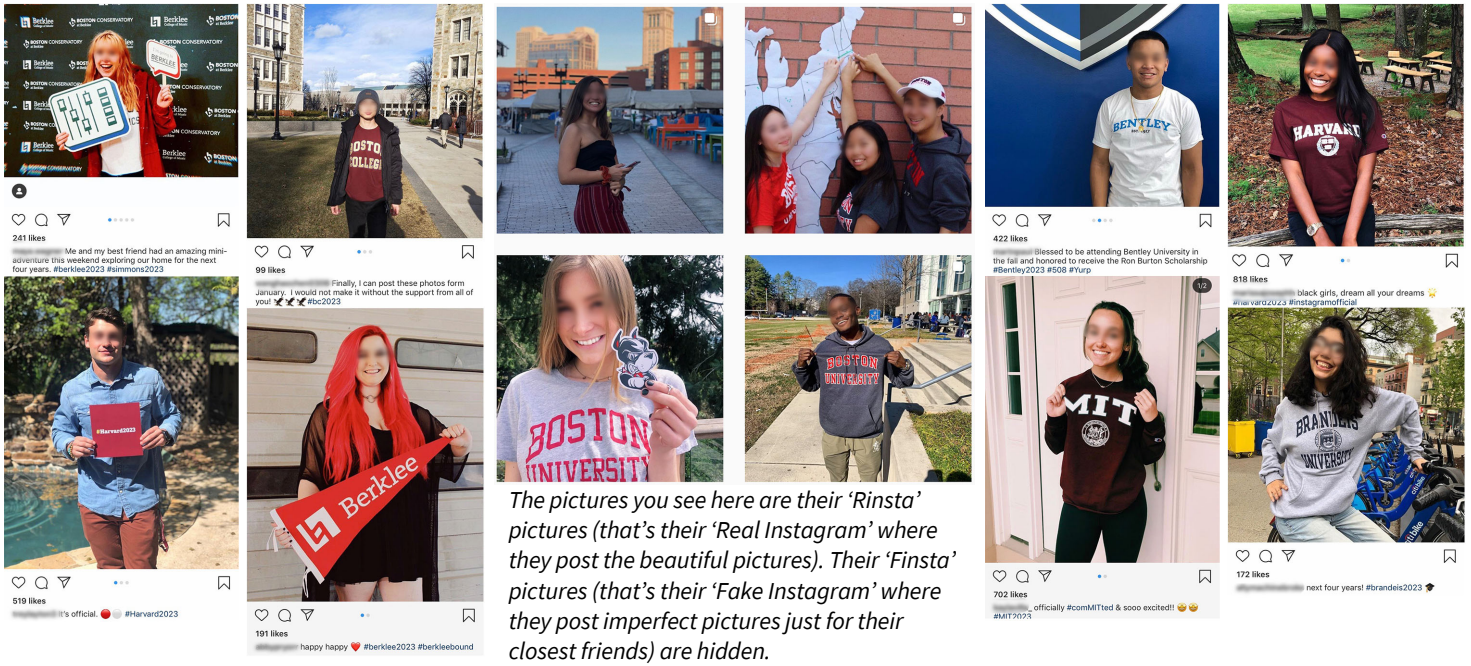
Brian & Malisa Ellis – Serving with Cru in Boston



# Change Boston

## I think I'll go to Boston...

Look how excited these students are to be coming to Boston for college:



We've been doing this long enough to know that freshmen coming to Boston do not have it all together. Particularly, they struggle with social anxiety. And so that's why, every year, we get e-mails like this from parents:

"My daughter is a freshman this year. I was wondering if you or a colleague or another student you may know there would be willing to reach out to her and invite her either to a large group meeting, small group meeting or to church? She grew up going to church, attending youth groups, mission trips, Christian summer camps and loved them all. The past year she grew a little distant, and I think she's in a journey of self-discovery. She texted me today and we got on the topic of whether she felt connected and said "no" "not yet." I asked if she would be open to someone from Cru contacting her and she said "sure." So I was hoping you or someone you may know would be willing to reach out to her? She has a bit of social anxiety (which you can't tell at all), so would probably not initiate going to a Cru gathering by herself. Here is her info in case you are available to reach out to her:"

50,000 new freshmen are about to come to Boston. We want them to find their identity in Jesus. It usually takes 5-10 text message exchanges before we get to meet up in person with a new student. **Would you pray for open doors?**

Loving our adventurous Lord,

*Brian & Malisa*

### Prayer Requests

- For students to be open to sharing their "finsta" with us in real life... God changes what we open up about.
- For our digital outreach to incoming students – that many would find their real identity in Jesus.
- For Malisa and me as we coach new Cru team leaders from across the country this summer. Malisa is coaching Asian American team leaders, Brian operations team leaders.



### Malisa & Brian Ellis

87 Stowcroft Rd.  
 Arlington, MA 02474  
 malisa.ellis@cru.org, (617) 800-6844  
 brian.ellis@cru.org, (978) 828-8024  
 Info on how to give to our ministry at  
 www.brianandmalisa.com