

September 1, 2023

Brian & Malisa Ellis – Serving with Cru

Change Boston



Prayer Walks

For as long as Brian and I have been working together in Boston, we've always started the year with our team doing a prayer walk around the campuses we're working with. I remember 15 years ago sitting in front of Warren Towers, one of the largest dorms in the country. We prayed for the students who would be moving into that dorm - that they would experience a gospel community and that many would start following Jesus. In the years that have followed, those prayers have been answered many times over. We can trace generations of disciples from students like Ethan and Alex that were the first answers to those prayers.

We're praying for all the students in Boston - that they would Know Jesus, Grow in Jesus, and Go With Jesus to the world. **Would you pray alongside us toward that end?**

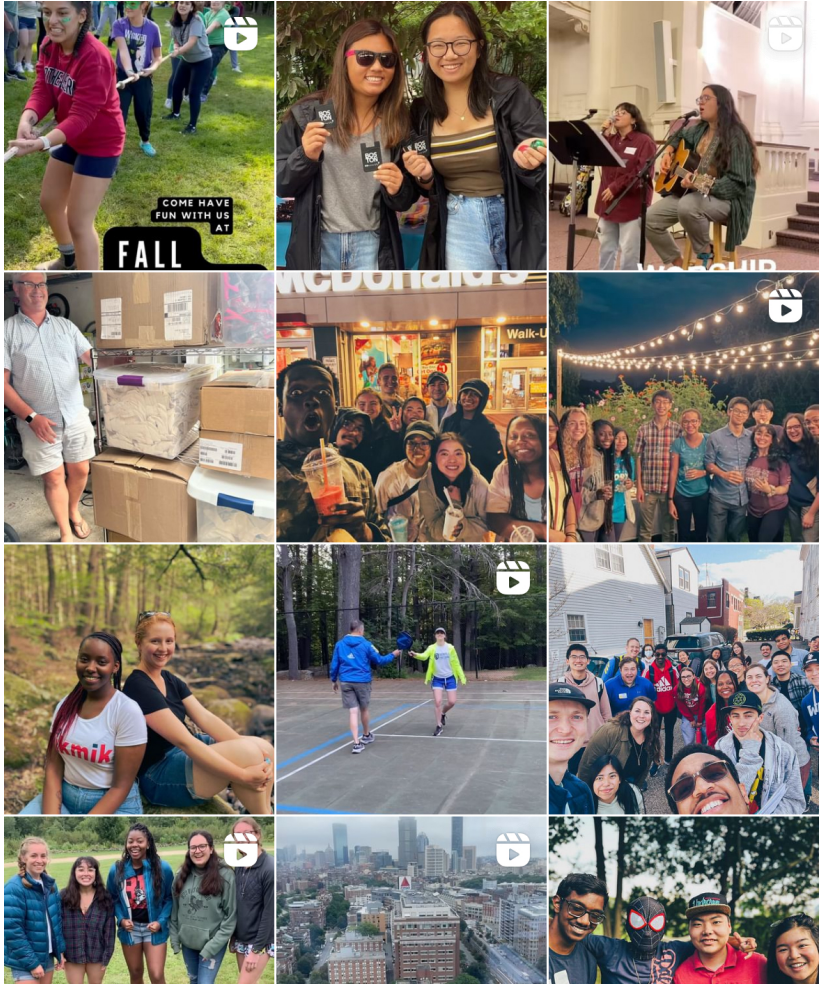
This is a very important part that we rely on you for. Brian and I are so thankful for your prayers. We thank God every time we remember you. In all our prayers for all of you, we always pray with joy because of your partnership in the gospel (See Philippians 1). Here's the mission God has called us to: **seeing every student in Boston and beyond hear the gospel.** And that's the kind of mission that is so far beyond what we can do. Only a move of the Holy Spirit can accomplish it. So we pray together. It's why we're so thankful for you, our partners. Would you pray? And would you also pray for all of our Cru movements across New England? We've been starting to pray for them too.

Loving our adventurous Lord,

Brian & Malisa

Would you pray:

- We've attached a prayer walk guide for one of our campuses, Boston University, to give you an idea of the kind of prayer walks we do and give you some things to pray for.
- Pray for our family as the kids start back to school right after Labor Day. Pray for: Sydney (7th Grade), Eliza (4th Grade), and Genevieve (1st Grade)



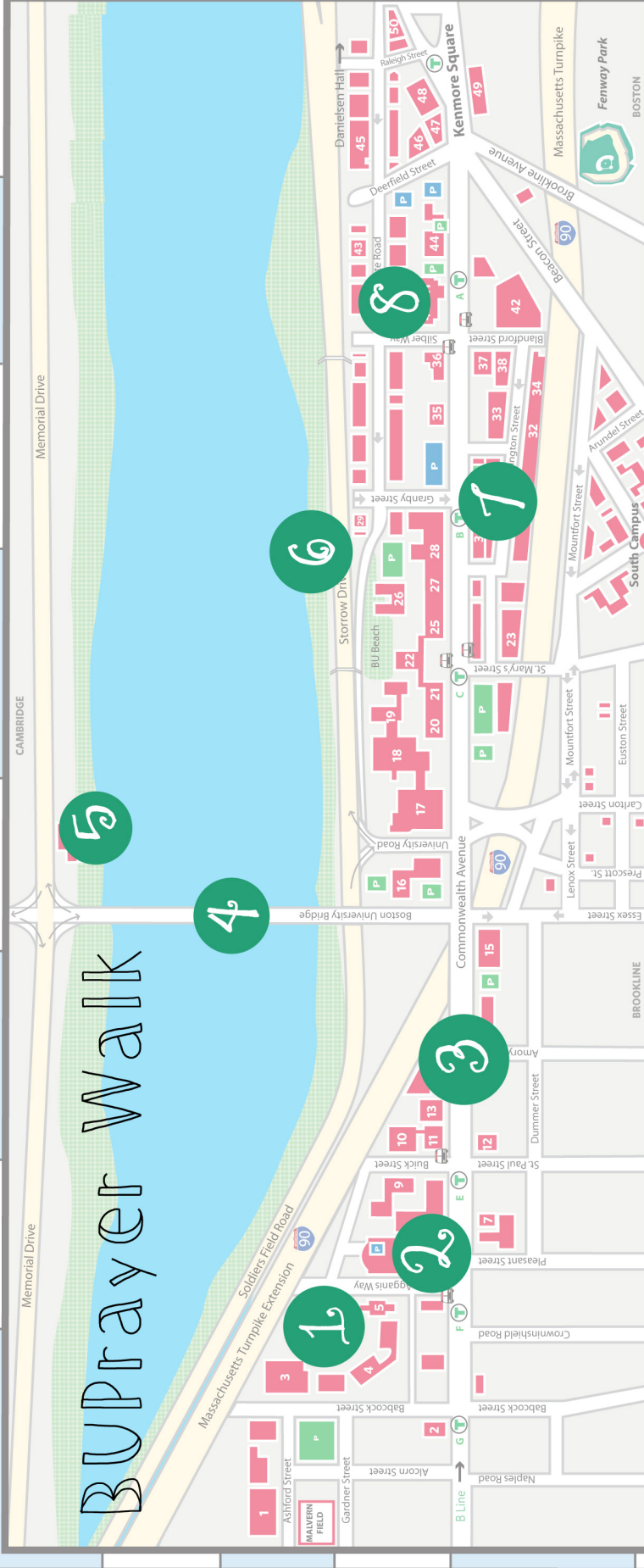
Some Insta Snapshots. We use Instagram to help welcome students before they even get to campus.



Malisa & Brian Ellis

87 Stowecroft Rd.
Arlington, MA 02474
malisa.ellis@cru.org, (617) 800-6844
brian.ellis@cru.org, (978) 828-8024
Info on how to give to our ministry at
www.brianandmalisa.com

BU Prayer Walk



1

Undergraduates: Pray for creative and innovate inroads with the 19,000 undergrads. Specifically, that our sophomore and freshman classes will find a great spiritual community in Cru and become multiplying disciples.

2

Athletes: Pray for class of 2027 athletes. Pray for Tucker as he merges in more and more with AIA. Pray for wisdom on how to care for the two different groups of Athletes.

3

Scope: Pray for our entire scope: BU, NEU, Simmons, WIT, Emmanuel, MCPHS, Berklee, NEC, Emerson, Mass Art, SMFA, Roxbury CC, and other smaller schools.

4

Bridges: Pray for undergraduate students who are believers to connect with community, inroads in the Graduate student world. Pray for Mike and Ruth who are working at BU.

5

Student Leaders: Pray for Hannah, Joan, Teresa, Raphael, Maggie, Tim, and John as they lead out this semester as an E-board. Pray for our entire leadership community that is beyond our E-board.

6

Undergraduates: Pray that our students have great connections with peers, friends, classmates, and floormates. May those intentional first steps help the Gospel be beautiful and attractive to those who don't yet know Christ.

7

Freshmen: Pray for deepening connections with the 10 freshmen that we have connected to over the summer and great first interactions over the next few weeks. Our goal in Fenway is 60 freshmen by May. Let's pray for 120 this Fall.

8

Faculty: Pray for our Advisor and other Christian Professors on campus. **Graduate Students:** Pray for in roads to 16,000 graduate students at BU.