

KINGDOM COME

MATTHEW 6:10

Reaching the city of **San Francisco** for **Christ**

NICH & TRICIA BEEBEE | SUMMER 2012 | CRU  & the EPIC MOVEMENT 

This summer we have the awesome privilege of staffing the San Francisco Summer Project for the second year in a row. We actually weren't sure what we should do with our summer. Bringing a 5 month old baby to live in a hostel among 30+ others excites Nich but terrifies Tricia! But in the end, we wanted to take a step of faith and felt drawn to be a part of the team God has pulled together. Let us introduce you to a few of them...

Brent Wong

You may remember Brent's name because Nich has served with him on his first UC Irvine team from 2005-2008 and he also married us! His family (wife Leila, sons Jaron and Micah) are very dear to us. We loved being on project with them last year. They were even some of the first people to find out Tricia was pregnant – we're very open with them to say the least. Brent is leading the project this year with another good friend of ours Jill. They both led the project in Hawaii in 2010 that we were both on and really led by the Spirit and with a lot of courage. You can pray for them as they're planning and preparing now. They will be in charge of leading our staff team of 12 and the 25 students.



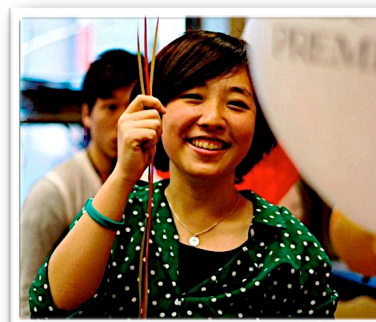
Nick Lê

We don't like to play favorites with our students, but IF we had favorites, Nick would be one of them. He's Vietnamese and is from Riverside, CA. He walks around in the skinniest jeans and adores his music bands. He's travelled all across the country to see bands and somehow gets to know the band members well – he's kind of a roadie! But also something to know about Nick is that he truly has an intimate relationship with God. He buys different Bibles all the time because he keeps filling them up with his writing and notes. His relationship with God is very dynamic and encourages us so much. Nick hasn't really gotten involved in Epic until the past year, and even though he's graduating, he's choosing to invest his last summer by going on project with us. He's even thinking about volunteering or interning at UCI's Epic in the upcoming years.



Sabrina Yu

So far, we've been interacting with the team through a facebook group and we are both coaching students through raising support. Tricia has especially enjoyed coaching a junior gal from Hong Kong named Sabrina. She actually JUST became a follower of Jesus when she was in Japan last summer. Like Mashi from our last newsletter, Sabrina ran into some of our Epic students who were on project there as she was studying abroad and she desired to know God and made a decision to follow him then. Every time Tricia talks to her on the phone she can just hear her excitement to grow in her faith this summer, but she's nervous with the support she needs to raise. She's halfway there - we pray she'll be all finished by the time project starts on June 16th!



Pretty soon we will be packing up our Camry and road tripping with Naomi up to San Francisco. We'd love your prayers as we settle into the hostel and start working with our staff team, ministering to the students and engaging the city with the love of Jesus! We'll be there mid-June until mid-July and we can't wait to share with you what God does through our team!

We are so thankful for your partnership in changing students' lives and ultimately the world through Jesus. God continues to use you mightily in our lives, as well as the lives of college students in Southern California, San Francisco and around the world.

Blessings,

NICH & Tricia



\$100, \$200 or \$_____ (write in amount).

this summer (please write e-mail address below).



iti: _____ Phone: _____

s summer? Please tell us: _____

(...continue to write on back)

nsideration. If you should decide to give please make your
or visit: <http://give.cru.org/give/0533048> All gifts are tax deductible.

NAOMI BEEBEE | EPIC MOVEMENT & CRU

el! If you feel led to give towards the San Francisco Summer Project
to, please use this slip and the enclosed envelope.

for your summer in San Francisco ...

of the following people (circle at least one):

a Beedees the whole project

\$100, \$200 or \$_____ (write in amount).

this summer (please write e-mail address below).



iti: _____ Phone: _____

s summer? Please tell us: _____

(...continue to write on back)

nsideration. If you should decide to give please make your
or visit: <http://give.cru.org/give/0533048> All gifts are tax deductible.