

KINGDOM COME...

Matthew 6:9

UC IRVINE & UC RIVERSIDE

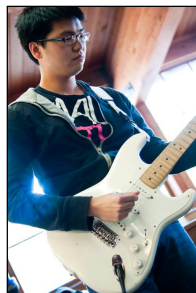
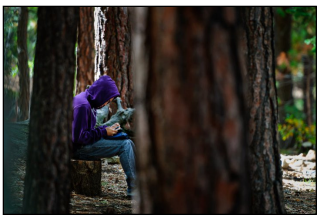
NICH & TRICIA BEEBEE | NOVEMBER 2010 | EPIC MOVEMENT & CAMPUS CRUSADE for CHRIST

Hello everyone! It's with a lot of excitement that we write the *first* update letter from the both of us. All of you have fervently prayed for us & generously given to make our 7+ years in full-time ministry possible. We look forward to our future interactions with you & desire to truly come alongside you as we live our lives for Jesus.

Fall Retreat 2010

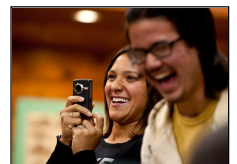
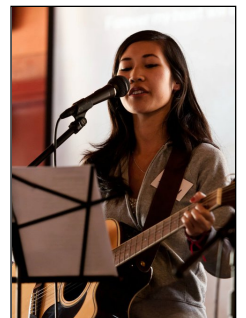
We set our wedding date on October 30th because we knew we couldn't miss out on the Fall Retreat (October 22nd - 24th). It is such a crucial time for students to gather away from their campuses and get time to reflect on their relationships with God. We had a handful of non-believers attend and it was especially unique this year because we had a melting pot of students from Destino (the Latino ministry), Epic (the Asian-American ministry we're a part of) and Impact (the African-American ministry).

John & Faye Waidley were the speakers for the weekend. They used Ezekiel 22:30 to charge students to "stand in the gap" between those who know Jesus and don't know Jesus. They also helped the students view their ethnic backgrounds as a means to bridge cultures & relate more personally with those around them. **Praise God for all He is doing in these students' lives.**



F
A
L
L

R
E
T
R
E
A
T



The New Beebees!

As for our lives, it was so nice to have our honeymoon in Kauai & just rest after 9 months of wedding planning and moving. Lately we've been busy settling into our Irvine apartment and getting all the necessities. We're loving our location because we live literally right behind a grocery store & walking distance from Trader Joe's, the post office, and UC Irvine.

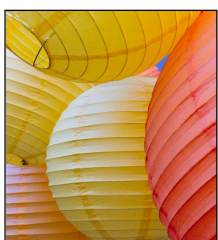
Our main job right now is to work on our full-time support until we can raise all of the support that we need. Since we both joined staff (in 2004 & 2005), we have never taken full-time off to work on our support so our monthly support has dwindled & we're praying to get it back up to a place where we can be on full-time again. We're praying that we'll be done by late March before the Spring Quarter starts. Please note that our staff account has now merged into one. We are operating with Nich's staff account #0533048. For all of those who have supported Tricia, please let us know if there are any problems in giving! Thank you for giving & praying for us during this time!

Would you join us in praying for...

- **Our students** not become complacent in their relationship with God in the midst of their regular daily lives & school schedules.
- **Both of us** as we settle into our apartment & daily life together! Pray that we find furniture for our apartment & God would give us focus as we plan our days. Also, please pray for our monthly support to increase as we're both eager to be investing time on campus with students!

(Tricia's mom and sister, & the new Beebees!)

(UC Riverside this year at Fall Retreat more than doubled from last year!)



We are so thankful for your partnership in reaching lost students and ultimately the world. This ministry is only possible through your prayerful and financial support, and we are grateful for your sacrificial giving. Thank you for joining us in helping reach the world for Christ and for being a part of our team! God continues to use you mightily in our lives, as well as the lives of college students in Irvine, Riverside and around the world.

Blessings,

NICH & TRICIA

